

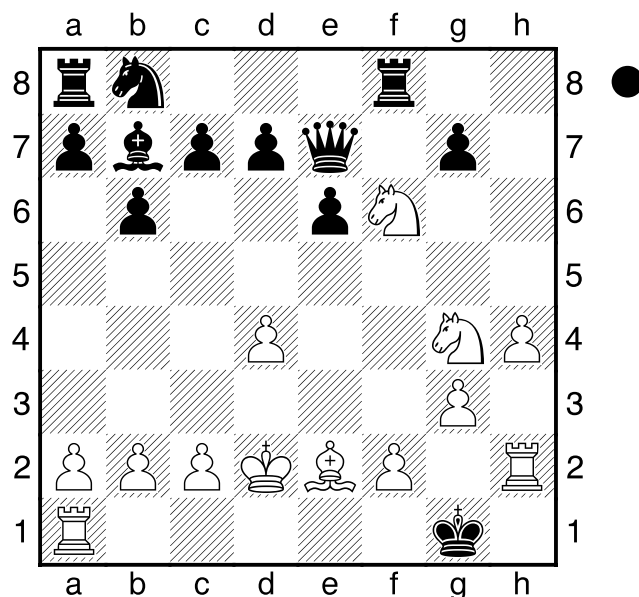
□ Lasker, Edward
 ■ Thomas, George
 London
 [Hicks, E]

A83
2500

1912

1.d4 Kasparov's favorite move. **f5** The Dutch defense. Very dangerous if not played properly, and even played properly leads to difficult games. Used mostly as a "surprise" tactic. Played by very few of today's grandmasters.
2.e4?! Sacrificing a pawn to try to blow black out of the water by taking advantage of the weak e8–h5 diagonal. **fxe4** Good to take the pawn and let white prove what he gets. Remember, white sacrificed a critical center pawn. Those king of gifts you should always accept. **3.Nc3** Developing with threats. **Nf6** Developing while defending. Not only does this move try to hold on onto the epawn, it also protect the square h5 from the enemy queen. That queen check is scary. **4.Bg5** Threatening to win the pawn back by REMOVING THE DEFENDER with BxN. **e6** Since black has no way to defend the pawn, he gives back his extra pawn gracefully and continues with normal development moves. **5.Nxe4** Taking advantage of the newly PINNED knight by PRESSURING THE PINNED PIECE. **Be7** Breaking the pin. **6.Bxf6** By taking this piece, white removes the defender main defender of the e8–h5 diagonal. **Bxf6** Back to normal development. **7.Nf3 b6** Preparing to FIANCHETTO the bishop. This is too slow and passive in this kind of position. **8.Ne5** Threatening combinations involving the brutal Qh5+. **0-0** If black did not castle he would have died in a hurry. **9.Bd3** This position is greatly positioned on this square for an attack on the castled king. **Bb7?** Necessary was to trade off some of the white pieces surrounding the black king. Black should have played the more purposeful 9. ...f6xe5. **10.Qh5** Aiming at key targets around the king. Lasker is threatening Nx B (removing the defender off h7) and then Qxh7 mate. **Qe7** Now h7 will be defended if white trys Nx B (do you see how?) **11.Qxh7+!!** Forces checkmate in 7 moves!

Lasker actually announced after his queen move for all in the tournament hall to hear... "Mate in 7!" **Kxh7** Forced to eat the queen. **12.Nxf6+** DOUBLE CHECK **Kh6** Forced. Kh8 would have led to mate. Do you see how? **13.Neg4+** Fishing the king out. **Kg5** Forced. **14.h4+** Forcing the king to walk out further. By the way, what you are seeing is referred in the chess business as a KING WALK. **Kf4** Forced. **15.g3+** Bringing the king closer and closer. **Kf3** Again forced. **16.Be2+** Even closer! **Kg2** Forced. **17.Rh2+** White will use ALL of his pieces in this attack, amazingly even his undeveloped rooks will be used...watch this trick. **Kg1** Forcing the king to the back row. **18.Kd2#** Diagram



Not often that you see a king move checkmate... but here is one.

1-0