

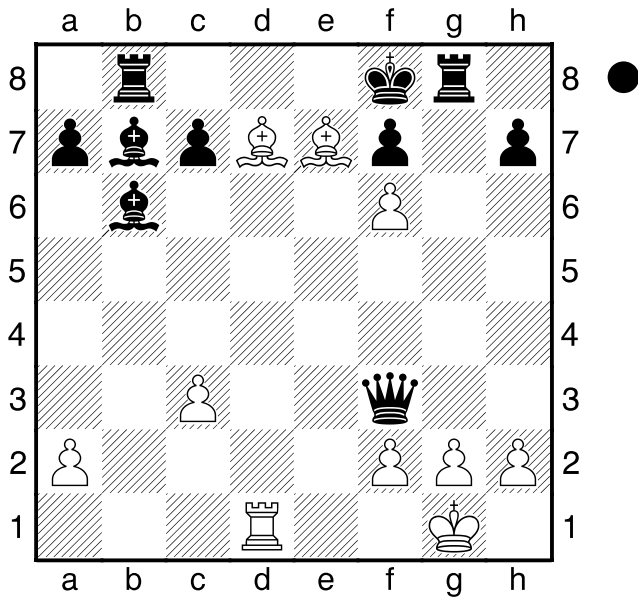
□ **Anderssen, Adolph**  
 ■ **Dufresne, Jean L.**  
 Berlin – (0.223) (EverGreen)  
 [Hicks, E]

**C52**  
**2700**  
**2525**  
 1852

**1.e4** The sharpest opening move available for white, and the reason it was played in most of the games back in the 1800's the "romantic era" of chess when games flourished with beautiful attacks. **e5** A strong move that help's black's position and prevents white from getting a pawn center. **2.Nf3** Developing with threats. **Nc6** Defending while developing. **3.Bc4** The most aggressive square for this bishop. Controls d5, and bites down on the weak square f7. **Bc5** Good for the same reason as black's last move. **4.b4?!** The Evans Gambit...a sharp try for control of the center and attacks on f7. Gary Kasparov played the Evans Gambit a few times in modern grandmaster play, a testimony to its soundness. **Bxb4** Usually the best move is to accept a gambit. Remember if you can take material for free, you should take it. **5.c3** The point of the Evans Gambit. White is able to play this LEVER with TEMPO. **Ba5** Keeps the pressure on c3. This is the only move that prevent's white from getting a keepable pawn center with d4. **6.d4** Notice that white's LEVER is PINNED. **exd4** Black takes while the c3 pawn is still pinned. **7.0-0** An extra aggressive castling maneuver. Now the PIN on the c3 is broken, enabling white to get a pawn center if given the opportunity, and now the rook is activated to slide over to the critical e file. **d3?!** White opts to keep the d file closed and slow white's devlopment down, since he is betting white will take the pawn. Better for black was probably to take the HANGING c3 pawn. **8.Qb3!?** Attacking the weak pawn Alfred. Usually, the fast attacks in the opening when Black is slow castling come on the f7 square. Notice white does not defend the HANGING d6 pawn...white will have plenty of chances to take the pawn later..it cannot be defended easily by the black pieces. **Qf6** Defending f7 and putting a double attacker on the c3 pawn. **9.e5!**

Black cannot take because of the resulting deadly PIN that would take place on the e-file. **Qg6** Clinging to protect the f7 pawn. **10.Re1** Grabbing the critical e file. Although the efile is not yet open, white is putting tremendous pressure on the center. For example black cannot play d6 because of the discovered check, and white is poised to play the battering ram pawn push e6. Developing to the best square available. The e5 pawn is a thorn in black's side. **Nge7** **11.Ba3** An extremeley powerful positon for the bishop. It puts incredible pressure on the centralized black king. **b5** Trying to remove some of the pressure off of f7. **12.Qxb5** Taking the free offering...the proper way to play. **Rb8** Grabbing the file with TEMPO. Not a bad play. **13.Qa4** White's best option. **Bb6** Strenghtening the under fire bishop, undoing the PIN on the knight (the knight was pinned to holding the bishop. Also this move bites down on white's weak f2 square. **14.Nbd2** Developing to the only square available. **Bb7** Black would have been better off if he castled here now that he has the opportunity. Remember...castle often castle early. **15.Ne4** Centralizing the knight where he attacks key squares. **Qf5** A needless queen move. Black had better moves like d2 (forcing white to waste time to take the pawn) or Nd4 (starting an attack on white.) **16.Bxd3** Threatening DISCOVERED ATTACKS on the queen. **Qh5** **17.Nf6+!** The beginning of one of the most brilliant attacks in chess. **gxf6** Forced. **18.exf6** Opening up the e-file with a bang. **Rg8** A strong move that activates the rook, attack's white knight by pinning g2, and threatening mate with the help of the queen, and bishop on g7. If white did not have brilliancies here, this position would be equal. **19.Rad1!!** Gambitting a piece (the knight on f3) in exchange for a brilliant attack. **Qxf3** Accepting the offered piece. **20.Rxe7+!** **Nxe7?** THIS move leads to forced mate. Black would have been better with 20. ....kd8. **21.Qxd7+!!** Sacrificing the queen for an unstoppable checkmate. Not an easy move to see. **Kxd7** What else is he going to do? **22.Bf5+** DOUBLE CHECK. **Ke8**

Nf6 would have been met with Bd7#. **23.Bd7+**  
**Kf8 24.Bxe7#** Diagram



Brilliant! If black would have just castled back when he had the chance, none of this would have happened.

**1-0**