

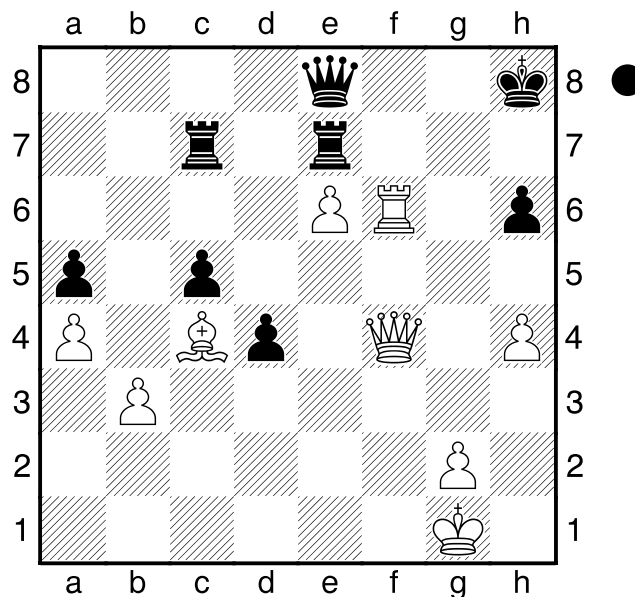
**Fischer, Robert James** **D59**  
**2785**  
 **Spassky, Boris V** **2660**  
 World Championship 28th 23.07.1972  
*[ChessBase]*

**1.c4!?** Fischer was famous for playing 1. e4. Best by test he would often say. Spassky spent hundreds of hours preparing with coaches to play against Bobby Fischer's opening book. By playing c4 Fischer shocked Spassky and the rest of the world by playing something unexpected. 1. c4 is called the English Opening. It is not a weak opening, but something Fischer had never played before in public. In its most aggressive form in the English, white continues with Nc3, d3, g3, Bg2, and tries to dominate e4 and especially d5. **e6 2.Nf3** Developing and controlling two center squares. **d5** A bold statement in the center. **3.d4** Now transposing to a QUEENS GAMBIT. Although black can take the c4 pawn, it is not without its costs. White will almost always win the pawn back after Nc3 (to prevent b5) and then e4 attacking the pawn with the c1 Bishop. **Nf6** Developing and controlling two center squares. **4.Nc3** Developing and controlling two center squares. **Be7** Developing the bishop. Preparing for kingside castling, and preventing an annoying pin on the f6 knight. **5.Bg5** Imagine how strong this move would have been if black had played 4. ...Bd6, or Bb4 the move before. **0-0** Castle often castle early. **6.e3** Unleashing the white squared bishop. **h6** Putting the question to the bishop. Are you going to crap or get off the pot? **7.Bh4** Choosing to back up and keep the pressure on. Daring black to screw up his king's pawn cover by playing 7. ...g5. **b6** Preparing a c5 pawn push. Also now black has the option of FIANCHETTOING his dark squared bishop. [7...Nbd7 8.Rc1 b6 9.cxd5 exd5 Tartakover (9...Nxd5? 10.Bxe7 Qxe7 11.Nxd5 exd5 12.Rxc7) 10.Bb5!± Capablanca] **8.cxd5** Pawns in the middle are very strong. By trading this pawn, white is trading a non-central pawn for a center one. Now white has two pawns in

the center and black only has one. [8.Be2 Bb7 9.Bxf6 Bxf6 10.cxd5 exd5 11.0-0 Korchnoi-Geller/Suchumi/1971/] **8...Nxd5 9.Bxe7** Trading off black's GOOD BISHOP. Note: Although white's pawns are on dark squares, the dark square bishop is OUTSIDE of the pawn chain and is therefore not a BAD BISHOP. **Qxe7 10.Nxd5 exd5 11.Rc1** Grabbing the HALF-Open file and slowing down black from playing c5. **Be6 12.Qa4** Developing the queen to an active square. **c5** Black bites down on the center. **13.Qa3** PINNING the pawn to the queen. **Rc8** Backing up the pawn and fighting for control of the critical c file. **14.Bb5!** Developing the Bishop to an ultra-aggressive spot. **a6** [14...Kf8 Δ c4, a6, b5 15.dxc5 **A**) 15...Rxc5! 16.Rxc5 Qxc5! 17.Kd2 (17.Qxc5+ bxc5 18.Kd2 Ke7 19.Rc1 Kd6 Δ 20...♗d7 Zelinskis) 17...Qxa3 18.bxa3 Nd7 19.Bxd7 Bxd7 20.Ne5 Be8 21.Rc1 Ke7 22.Kd3 f6 23.Nf3 Kd6 24.Kd4 Bd7 25.Nd2 Re8 26.f3 g5 ½/Zelinskis-Sichov/corr/1971; **B**) 15...bxc5 16.b3 c4 17.Qxe7+ Kxe7 18.Nd4 a6 19.Ba4± Timman; 14...Qb7 Δ 15... c4 Pachmann 15.dxc5 bxc5 16.Rxc5 Rxc5 17.Qxc5 a6 18.Bd3 Qxb2 19.0-0 Nd7 (19...Qxa2? 20.Nd4) 20.Qc6 Rb8 21.Nd4 Qb6 22.Rc1± Timman] **15.dxc5** Since the a-pawn is PINNED, Fischer ignores its threat. **bx5 16.0-0** Castle often castle early. **Ra7** Moving the rook to a square where it is protected so that the threat PxB is renewed. [16...Qb7 Geller 17.Ba4! Qb6 18.Ne5 Δ 19.♗d3 **A**) 18...Ra7 19.f4! (19.Nd3 Rac7); **B**) 18...a5 19.f4! (19.Nd3 Na6) 19...f6 20.f5 Bf7 (20...fxe5 21.fxe6 Na6 22.e4!) 21.Nxf7 Kxf7 22.Rfd1± Andersson; 16...Qa7 Larsen 17.Be2 (17.Ba4 a5 18.Ne5 f6! 19.Nd3 Na6=); 16...Nc6 Donner 17.Bxc6 Rxc6 18.Ne5! (18.Nd4 Rc7 19.Nb3 d4!±) 18...Rc7 19.Nd3±] **17.Be2** The bishop must retreat. [17.Be2] **17...Nd7** [17...c4 18.Qxe7 Rxe7 19.Nd4 Nc6 Tal 20.Nxe6 fxe6 21.b3 Na5 22.bxc4 Nxc4 23.e4± Rec7 24.Bg4 Purdy; 17...a5 18.Rc3 Nd7 19.Rfc1 Re8 20.Bb5± Furman-Geller/USSR ch/1970/] **18.Nd4!** Taking advantage of the pinned pawn and aiming to trade off black's

strong white squared bishop. **Qf8** ? Timman [  $\Delta 18...Kf8\pm$  Purdy ;  $\Delta 18...Nf8\pm$  Purdy ;  $\Delta 18...Nf6$  19.Nb3 **A**) 19...Ne4 **A1**) 20.Bf3 c4 21.Qxe7 Rxe7 22.Bxe4 (22.Nd4 Nc5 23.b3 cxb3! 24.axb3 Nd3 25.Ra1 Nb4 $\mp$ ) 22...cxb3! (22...dxe4 23.Nd4 $\pm$ ) 23.Rxc8+ Bxc8 24.Bxd5 bxa2 25.Bxa2 Rb7= 26.Rc1 Bf5 Timman ; **A2**) 20.f3! c4 21.Qxe7 Rxe7 22.Nd4 (22.fxe4 cxb3=) 22...Nc5 23.b3  $\perp \pm/\pm$  Timman ; **B**) 19...c4 $\pm$  Purdy ; **C**) 19...Nd7 $\infty$  Timman 20.Bb5 Nf6 ] **19.Nxe6! fxe6 20.e4!** Offering a pawn in order to break up black's powerful center. **d4** [ $\Delta 20...Nf6$  Purdy 21.exd5 exd5 22.Bf3 $\pm$  Timman ; 20...c4 21.Qh3 Qf7 **A**) 22.Bg4 Re8 23.exd5 exd5 24.Rfe1 Ne5 (24...Rxe1+ 25.Rxe1 Kf8) 25.Bh5 g6 26.Qg3 Rae7 27.f4 Nd3 (27...Kh7!?) 28.Rxe7 Rxe7 29.Bxg6 Qxf4 30.Bf7+! Kxf7 31.Rf1 Qxf1+ 32.Kxf1 Re1+ 33.Qxe1 Nxe1 34.Kxe1+- Tal ; **B**) 22.Bh5 Qe7 (22...g6? 23.Bg4+-) 23.exd5 exd5 24.Rfe1 Qf6 25.Bg4+- Timman ] **21.f4** Controlling the center. **Qe7** [ $\Delta 21...Kh8$   $\Delta$  22.e5  $\Delta$  b6 22.Bc4  $\Delta$  23.e5 $\pm$  e5 23.fxe5 Qe7 24.e6 Ne5 25.Qg3! Nxc4? 26.Rf7+- Timman ] **22.e5** With white's pawns on black, the white squared bishop has more scope. **Rb8** [22...Nb6? 23.f5  $\Delta$  24.f6 **A**) 23...c4 24.Qa5 Qc5 25.b4! Qb5 ( $\Delta$  25...Qc6 26.Rf4) 26.a4!! Nxa4 27.Rxc4! Rxc4 28.Qd8+-  $\rightarrow$  Timman ; **B**) 23...exf5? 24.Qb3+- Purdy ] **23.Bc4 Kh8** [ $\Delta$  23...Nb6 24.Qxc5 (24.Qb3!+- Tal) 24...Nxc4 25.Qxc4 Rxb2 26.Qxd4 (26.f5 Qg5) 26...Rab7 Purdy (26...Rxa2? 27.f5 Rd7 28.f6!+-)] **24.Qh3** Aiming at e6. Once e6 comes off, white has a PASSED PAWN just three squares from queening. **Nf8 25.b3 a5 26.f5** Forcing open the f-file. **exf5 27.Rxf5 Nh7 28.Rcf1** [28.Rf7?? Ng5] **28...Qd8 29.Qg3 Re7 30.h4 Rbb7 31.e6! Rbc7 32.Qe5 Qe8** [32...d3 33.R5f3+- Timman] **33.a4 Qd8 34.R1f2 Qe8 35.R2f3 Qd8 36.Bd3 Qe8 37.Qe4** Aiming at the black king. **Nf6** [37...Rxe6 38.Rf8+ Nxf8 39.Rxf8+ Qxf8 40.Qh7#] **38.Rxf6 gxf6 39.Rxf6** Now the black king has been opened up like a can of sardines. And all of white's pieces are pointed at him making the scenario worst for

black. **Kg8 40.Bc4** Planning a deadly assault on the 7th RANK with 41.Rf7! **Kh8** Running for his life. **41.Qf4** Diagram



Facing a dire position, black resigns. There is actually a forced mate in 7 here. For the sake of education, we shall continue. **Kg8 42.Rxh6 Rxe6 43.Qf6 Rg7 44.Bxe6+ Qxe6 45.Qxe6+ Rf7 46.Qe8+ Kg7 47.Qh8# 1-0**