

☐ Fischer, Robert James

■ Walker, RG

USA-chJ

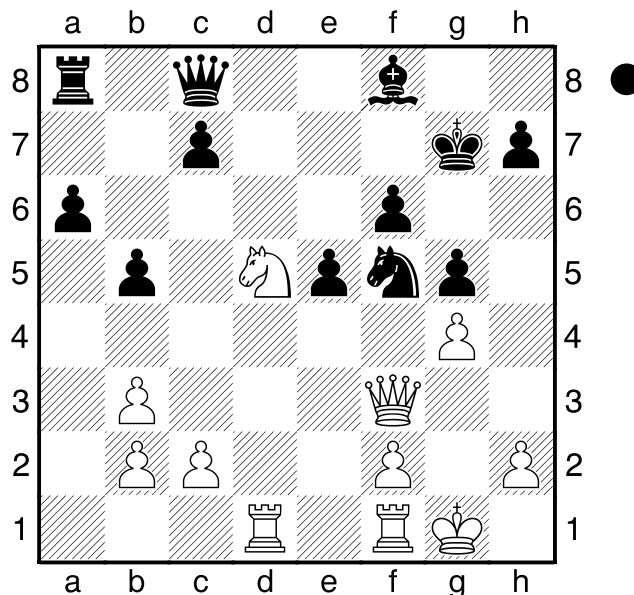
[Hicks, E]

C70

1957

**1.e4** Bobby Fischer's favorite opening move. Opening with a center pawn. Controlling e4 and d5, and developing the bishop and queen. **e5**  
**2.Nf3** Develops a piece. Knights before bishops, controls two center squares (e5 and d4), gets white closer to castling and attacks a pawn! The best move on the board! **Nc6** Most commonly played move. Prevents the pawn center (note how much easier it is for black to stop the pawn center when white plays d4 first.) Develops a piece and controls the center. **3.Bb5** Develops a piece and controls the center indirectly by attacking a piece that controls the center. **a6** **4.Ba4** **b5** **5.Bb3** **Na5** **6.0-0** Castle often, castle early. **Nxb3** A good idea. Trading that half-knight for whites powerfully placed bishop was a great idea. **7.axb3** **d6**  
**8.d4** **f6?** Pushing the f-pawn is dangerous and should not be done lightly. **9.Nh4** Trying to take advantage of the f pawn push. This move immediately threatens 10. Qh5+ with the idea that 10. ...g6 would be met by 11. NxP **Ne7** Preparing a defence to Qh5. **10.Nc3** Continuing on with natural development. **Be6**  
**11.Be3** **g5** Another weakening move. Black might be smoking crack. **12.Qf3** Ignoring the attack on the knight. This is not really a knight sacrifice since 12. ...PxN would be met by the fork, Qxf6 winning either rook or bishop. **Bg7** Defending the weakness. **13.dxe5** Why can't black take the knight? **dxe5** If black had played 13. ...PxN, then white would have played 14.ef forking knight and bishop. **14.Nf5** **Bxf5** **15.exf5**  
**0-0** **16.Rad1** Grabbing the OPEN FILE with TEMPO. **Qc8** **17.Bc5** PINNING the knight. **Nxf5** Sacrificing the EXCHANGE for no good reason. **18.Bxf8** **Bxf8** **19.Nd5** **Kg7** **20.g4**  
Diagram

Pressuring the pinned piece. The knight is pinned because it is blocking the white queen's attack on the f6 pawn. Black is down too much



material so he resigns.

1-0