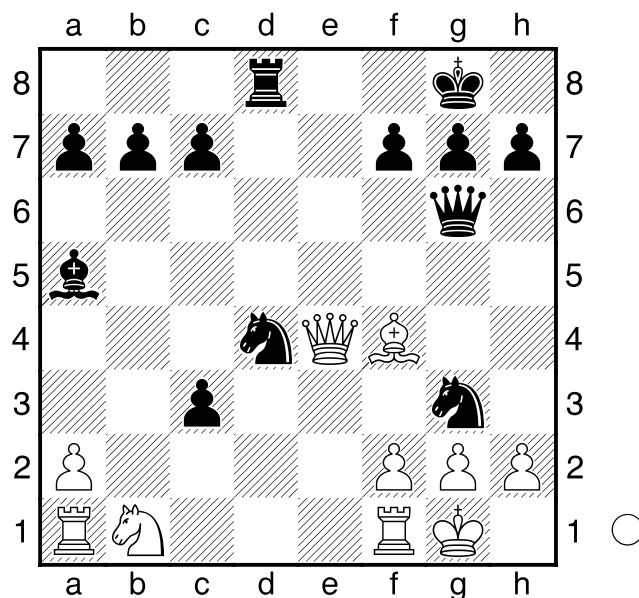


□ **Marache, Napoleon**
 ■ **Morphy, Paul C.**
 U.S. Champ. (Congress)

C52
2450
2800
 1857

1.e4 Best by test – Bobby Fischer **e5** Keeping equal footing in the center. Always open with a center pawn. Developing with threats. **2.Nf3 Nc6** Developing and protecting. **3.Bc4** Developing the bishop where it hits a center square (d5) and bites down on the f7 square. **Bc5** Good for the same reasons as white's last move. **4.b4** The Evan's Gambit. White sacs a pawn for center pressure and attacking chances on f7. **Bxb4** Usually it is best to accept the gambited pawn. In fact, you should always take free material unless you see definite devastating consequences on the horizon. **5.c3** Creating a PAWN LEVER with TEMPO. The point of the Evan's Gambit. **Ba5** Black chooses to keep the pressure on c3. This prevents white from claiming an absolute pawn center with d4, since the bishop on a5 maintains a pin on the c3 LEVER. **6.d4** White grabs the center anyway. This move is an attacking move rather than just a pawn center grabbing move. **exd4** It is a good time for black to take since white cannot take with the c3 pawn grabbing the PAWN CENTER. **7.e5?!** This move was popular in the day but not considered sound today. Better for white is to castle. **d5** An aggressive space grabbing move. **8.exd6 Qxd6** Morphy develops his queen to a square where she cannot be harassed by white's developing pieces. **9.0-0!** A good move. Not only is it defensive, but now white threatens to grab the critical e file with his rook. **Nge7** Black develops to this square so that the file is blocked. If Nf6, Re1+ would have been awkward. **10.Ng5** Wasting time. This is a cheap attack that black is easily able to deal with. **0-0** Defends f7, puts the king in safety and prepares to activate the f rook. **11.Bd3** Another cheap attack. **Bf5** Defending while developing...but did Morphy miss a white's tactical shot? Watch. **12.Bxf5** Seeing the tactical shot. **Nxf5** **13.Ba3** A SKEWER. **Qg6** **14.Bxf8** **Qxg5** **15.Ba3**

dx c3 Holding up the development of white's entire queenside. **16.Bc1** Repositioning the bishop to what white hopes will be a more effective diagonal. **Qg6** **17.Bf4** **Rd8** Grabbing the file with TEMPO. Activating the rook on the open file like this drastically improve black's position. **18.Qc2** **Ncd4** A natural move. A knight moved into the center with TEMPO has to be a good thing. Notice the knight is practically OUTPOSTED In this position, since it cannot be chased by white's pieces, and black can play c5 at any time. **19.Qe4** Although this move quickly loses to a brilliant tactic, all moves were bad here. White is already lost. **Ng3!!** Diagram



A brilliant DOUBLE ATTACK move. It attacks both the queen, and checkmate by playing N(d5)-e2. Since white cannot defend both weaknesses, he resigns.

0-1