

□ Spassky, Boris V  
 ■ Penrose, Jonathan  
 Palma de Mallorca

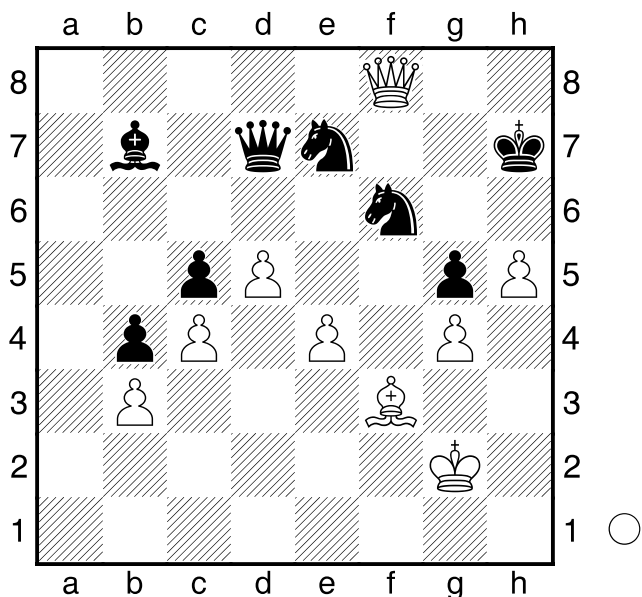
E80

1969

**1.d4** Opening with a center pawn. Kasparov's favorite move in later years. 1.d4 leads to more positional games than 1.e4 and is therefore good for Grand Masters. **Nf6** Notice a knight move stops the pawn center in d4 openings, where as in e4 openings a knight move would not stop the pawn center because of the natural backing of the queen for the move 2.d4 **2.c4** A "mini-pawn center". Second best thing to a full pawn center. **g6** King's Indian Defense. Fischer's favorite as Black. **3.Nc3** Pressuring key center squares and developing a piece. **Bg7** **4.e4** Now white has one heck of a pawn center. **d6** A big idea behind modern openings like the King's Indian is to allow white a pawn center and break it up later. d6 prepares the moves e5, or c5, both of which will break up white's pawn center. **5.f3** Strengthening the center. **c6** A PAWN LEVER. Threatening breaking moves like d5 and b5. **6.Be3** Re-enforcing the center. White's plan now is to hold on to his strong pawn center. If black does not play accurately, white's center will crush his development. **a6** A LEVER preparing b5. White's development precedes quickly and naturally. **7.Bd3 Nbd7** Black's development is pent up and frustrated because of white's center control. **8.Nge2** Re-enforcing the center and developing his last minor piece. **b5** Black tries to gain space on the queenside wing, and FIANCHETTO his bishop at the same time. **9.Qd2** Developing the queen to a safe square. Linking the rooks. **Bb7** Black develops his last minor piece, but behind a wall of his own pawns. **10.0-0** Even though the position is CLOSED and neither side has good king attacking chances, castling is still a great idea because it links the rooks and gets ready for activating them on possible open files. **0-0** Good for the same reasons as white's last move. Assuring a pawn stays on c4, even in the event black captures on c4. **11.b3 e5**

Finally, black challenges white's pawn center. **12.d5** White CLOSES the door on the center. **b4** By taking away the possibility of a pawn trade on the b-file, black CLOSES the position more. **13.Nd1** White's best option since he plans to activate the knight by playing it to f2. In CLOSED positions, it is not so bad to play slow, repositioning moves, and positioning of the knights is of utmost importance. Knights are more valuable than bishops in closed positions. **c5** CLOSING the position even further. Black is looking for a draw. **14.g4** Expanding for space on the kingside, the only non-locked part of the board. **Kh8** Preparing a space for the f6 knight to hop into. From g8, the knight will be able to go to e7. In a closed position, time is not so important, and positioning of the knights on the best available squares is extremely important. **15.Nf2** Lets go through some of the features of a closed position. For a complete description go to the lessons section on the website. CLOSED positions favor knights. TIME is not so important in a closed position because closed positions are void of action. IF a closed position cannot be opened, it could very well lead to a draw. **Ng8** **16.Ng3 Qh4** This could be the losing move. Now the queen is far from the queenside where the action is going to end up. **17.Kg2 h6** **18.a3** Forcing a file open for his rook. **a5** Making sure his rook benefits from the opening a-file. **19.Ra2** A DOUBLEING Manuever. **Ndf6** **20.Rfa1** DOUBLING the rooks on the soon to open file. **Nh7** **21.axb4 axb4** Forced. **22.Rxa8 Rxa8** **23.Rxa8 Bxa8** **24.Qa2** Grabbing the open file with TEMPO. Notice that the black queen is far away from the action, biting on granite on the white kingside. **Bb7** **25.Qa7 Qe7** **26.Be2 Nhf6** **27.f4 exf4** **28.Bxf4** Threatening to DEFLECT the queen with Bxd6 and then play Qxb7. **Ne8** **29.Qb8 Bd4** Hoping to trade a bishop (not good in a closed position) for a knight. **30.Nd3** White of course does not allow a trade bishop for knight in a CLOSED position. **f6** **31.Bf3** From here you will see a lot of minor piece maneuvering. **Qd7** **32.h4 Kh7** **33.h5 g5** **34.Bd2 Be5** **35.Be3 Ne7** **36.Nxe5!** Black did not prepare for this because he did

not think white would trade a knight for bishop in a closed position. White is preparing a brilliant sacrifice. **fxe5 37.Bxc5!** Trading a minor piece for two pawns. **dx c5 38.Qxe5** Now white has two ROLLING PASSERS in the center. **Ng8 39.Qb8 Nef6 40.Nf5** Hopping the knight to a powerful outpost. **Ne7 41.Nxh6! Nexd5** Unleashing the queen to defend the kingside. [41...Kxh6 42.Qf8+ Kh7 Diagram



43.Qxf6 And white is clearly winning.] **42.cxd5** Keeping two ROLLING PASSED PAWNS. **Kxh6 43.Qf8+** A fork. **Qg7** Saving the knight. **44.Qxc5** Now white has 3 pawns in exchange for the piece. And two of these pawns are rolling passed pawns. Black is clearly losing in this position.. **Nd7** Diagram

(Diagram)

**45.Qd6+ Kh7 46.e5** Passed pawns must be pushed. **Kh8 47.h6** Passed pawns must be pushed. **Qh7 48.e6** Passed pawns must be pushed. **Qc2+ 49.Kg3** Diagram

(Diagram)

Unable to stop the passed pawns, black resigns.

1-0

