

□ **Spassky, Boris V**
 ■ **Petrosian, Tigran V**

World Championship 27th
 [Bulletin]

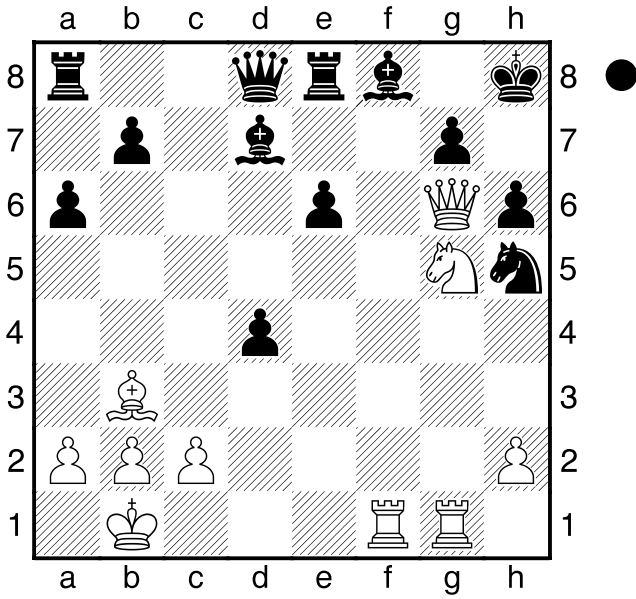
04.06.1969

B94

1.e4 This game was played in the 1968 World Championship between several of the strongest players in the world. Bobby Fischer was probably strong enough at the time to play for the title, but because of chess politics (world chess was controlled by the Russians) he would not get his chance until 1972 to play the winner of this match. (Spassky) **c5** The defining move of the SICILIAN DEFENSE. **2.Nf3 d6 3.d4** White immediately challenges the center. **3.d4 4.Nxd4 Nf6** Developing with threats. **5.Nc3** Defending while developing. **a6** The Najrforf Variation. **6.Bg5** Pressuring the center by pressuring a piece which directly controls the center. **Nbd7** A strange looking move...but it is not that bad. It assures a knight stays on the defensive post f6. Black thinks that white will trade with BxN. And if he doesn't, black can always develop his light squared bishop Fianchetto style. **7.Bc4** A powerful developing move. Controls a center square and bites down on the weak f7 square. **Qa5** Pinning the knight and developing the queen to an aggressive square where she is relatively safe from pestering attacks. Also notice that by PINNING the c3 knight, white is now threatening to win the e4 pawn with NxP. So this was a DEVELOPING WITH THREATS move. [7...h6?! 8.Bxf6 Nxf6 9.Qe2! e6 10.0-0-0 Qc7 11.f4 e5 12.Nd5± Tal; 7...e6] **8.Qd2** Breaking the pin and thus defending the e4 pawn, and preparing for queenside castle. **h6?! (Geller)** [8...e6 Δ b5, ♗b7 Gligoric] **9.Bxf6 Nxf6 10.0-0-0** Notice white's awesome development compared to blacks. **e6** [10...e5 11.Nf5 Bxf5 12.exf5 Rc8 13.Bb3 Be7 14.Rhe1± x d5; 10...g6? 11.f4 Bg7 12.Rhe1±] **11.Rhe1** [11.Bb3 Bd7 12.f4± - 1/326] **11...Be7?** [11...Bd7! Δ 0-0-0= Tal, Boleslavsky] **12.f4 0-0** Now the kings are castled on opposite sides of the board. In this

type of position, it leads to sharp attacks for both sides. The basic strategy with opposite castled kings is to PAWN STORM the enemy and open files pointed at the enemy king.. You will see some pawn storms here. **13.Bb3 Re8** [13...Bd7 14.Kb1 Δ f5±; 13...Rd8!?] **14.Kb1 Bf8** [14...Bd7 15.e5 dxe5 16.fxe5 Nh7 17.Nf5! Bc6 18.Nxe7+ Rxe7 19.Nd5+-] **15.g4! Nxc4** Black has nothing better but to accept the gambitted pawn. Now a major file is opened towards his king. [15...Nd7 16.h4 Nc5 17.g5± →» Geller; 15...Bd7 16.Rg1± →» Bondarevsky; 15...e5!? 16.fxe5 (16.Nf5 Bxf5 17.gxf5 exf4 18.Nd5! Qd8 19.Qxf4±) 16...dxe5 17.Nf5 Bxf5 18.gxf5 Rad8 19.Qg2 Qc7 20.Rxd8 Rxd8 21.Rg1 Kh8 22.Nd5± →» Boleslavsky] **16.Qg2** Repositioning the queen to the "Killer" file with a threat. **Nf6** Black must waste a move to defend. [16...e5 17.Nf5 Bxf5 18.exf5 Nf6 19.Qxb7±; 16...Qh5 17.Rd3 Δ ♗h3±] DOUBLING on the file. **17.Rg1 Bd7** Black desperately tries to complete his development. Notice he is atleast 3 developing moves behind white. [17...Qc5!? (Averbakh) 18.Nf3! Δ e5± (18.f5 Kh8 19.fxe6 Bxe6! 20.Nxe6 fxe6 21.Rdf1 Qe5 22.Ne2 Nh5±)] **18.f5** PAWN STORMING the black king. **Kh8?** [18...exf5 19.exf5 (19.Qg6? Kh8 20.Bxf7 fxe4!±) 19...b5 20.Qg6 Kh8 21.Bxf7 b4±] **19.Rdf1** Intending fxe6 and then RxN. **Qd8?** [19...e5? 20.Ne6! fxe6 21.fxe6 Bxe6 22.Rxf6+-; 19...Qe5!? (O'Kelly, Geller, Bondarevsky) 20.Nf3 Qf4 (20...Qc5 21.h4 Δ ♗g5; 20...Qa5 21.fxe6 Bxe6 22.Bxe6 fxe6 23.e5 dxe5 24.Nh4± → Bondarevsky) 21.Qh3 Δ ♗g5] **20.fxe6 fxe6** [20...Bxe6 21.Nxe6 fxe6 22.Ne2 Δ ♗f4± → Smyslov (22.e5 dxe5 23.Ne4!± Geller, Boleslavsky)] **21.e5!+-** A strange looking move which simply sacrifices a pawn to make a nice square for the f3 knight to hop into. **dxe5** The combination is thick that you are about to see. Make sure you look through all the variations and really try to understand why all the moves are played. **22.Ne4 Nh5** [22...Nxe4 23.Rxf8+- Rxf8 24.Qxg7#; 22...exd4 23.Rxf6+-] **23.Qg6! exd4** [23...Nf4 24.Rxf4! exf4 25.Nf3 Qb6

26.Rg5!! Bc6 (26...Qd8 27.Ne5+-) 27.Nf6
 Be4 28.Qxh6+!!+- (Geller)] **24.Ng5!** Diagram
 [24.Ng5 hxg5 25.Qxh5+ Kg8 26.Qf7+ Kh7
 27.Rf3 Δ ♖h3#]



1-0