

C29

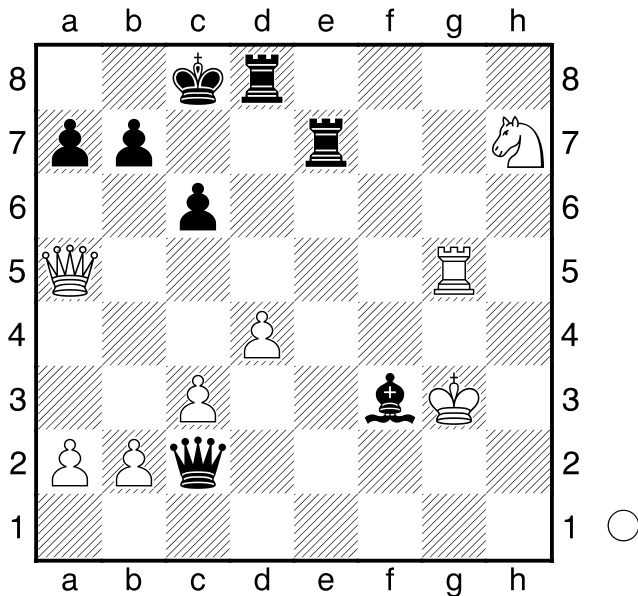
□ Steinitz,William
 ■ Lasker,Emanuel

London

05.07.1899

1.e4 e5 2.Nc3 Nf6 3.f4 King's gambit, one of the sharpest openings in chess. d5 4.d3 Nc6 5.fxe5 Nxe5 6.d4 Ng6 7.exd5 Nxd5 8.Nxd5 Qxd5 9.Nf3 Bg4 10.Be2 0-0-0 11.c3 Bd6 12.0-0 Rhe8 13.h3 Bd7 14.Ng5 Nh4 This mate threat is done in order for white to weaken himself positionally defending. 15.Nf3 White has wasted a lot of time with this knight. Nxc2 16.Kxc2 Bxh3+ 17.Kf2 f6 18.Rg1 g5 19.Bxg5 fxg5 20.Rxg5 Qe6 21.Qd3 Bf4 22.Rh1 Bxg5 23.Nxg5 Qf6+ 24.Bf3 Bf5 25.Nxh7 Qg6 26.Qb5 c6 27.Qa5 Re7 28.Rh5 Bg4 29.Rg5 Qc2+ 30.Kg3 Bxf3

Diagram



0-1